

Bolton

Together

## Job Opportunity

### Project Co-ordinator – Children and Families

*Co-ordinating the VSCE Family Hub Delivery in Bolton*



We are looking for someone to work alongside our Chief Officer and our members to co-ordinate a partnership programme for children, young people, and families. Driving forward the Family Hub Programme for the Bolton Together Delivery. You will be part of a small team who cares about you and your development and about the difference we and our members can make to children and family's lives. In return we offer flexible working, commitment to personal development, a supportive environment, being part of a dedicated and motivated team, interesting and varied work.

**£31,000 – £34,000 (dependant on experience)**

**Full Time 35 hours per week**

**Deadline for Applications**

**5pm 9<sup>th</sup> June 2023**

**Initially 2 years with the possibility of extension (subject to funding) Home working with travel to and in Bolton for meetings and office days**

## Background to Bolton Together

Bolton Together is the children and Young People's consortium for the voluntary sector in Bolton. We are a registered charity leading on contract management and quality assurance of several programmes, distributing funding to enable our members to deliver services and support to children, young people and families in Bolton. We currently have 32 members. Find out more here: <https://bolton-together.org.uk/>



## A note from our Chief Executive Officer

This is an exciting time to join us as we secure large new contracts and continue to facilitate a collaborative approach to supporting children, young people and families in Bolton to improve their well being and quality of life and increase future opportunities. This role will be pivotal in driving forward the Family Hub Delivery Programme for the voluntary sector in Bolton. If you are motivated and able to multitask, well organised, an excellent communicator and

dedicated to excellent service delivery we would be very interested in hearing from you. You will have a high level of autonomy in this role, a chance to move things forward without complicated decision-making structures, with full support from your colleagues

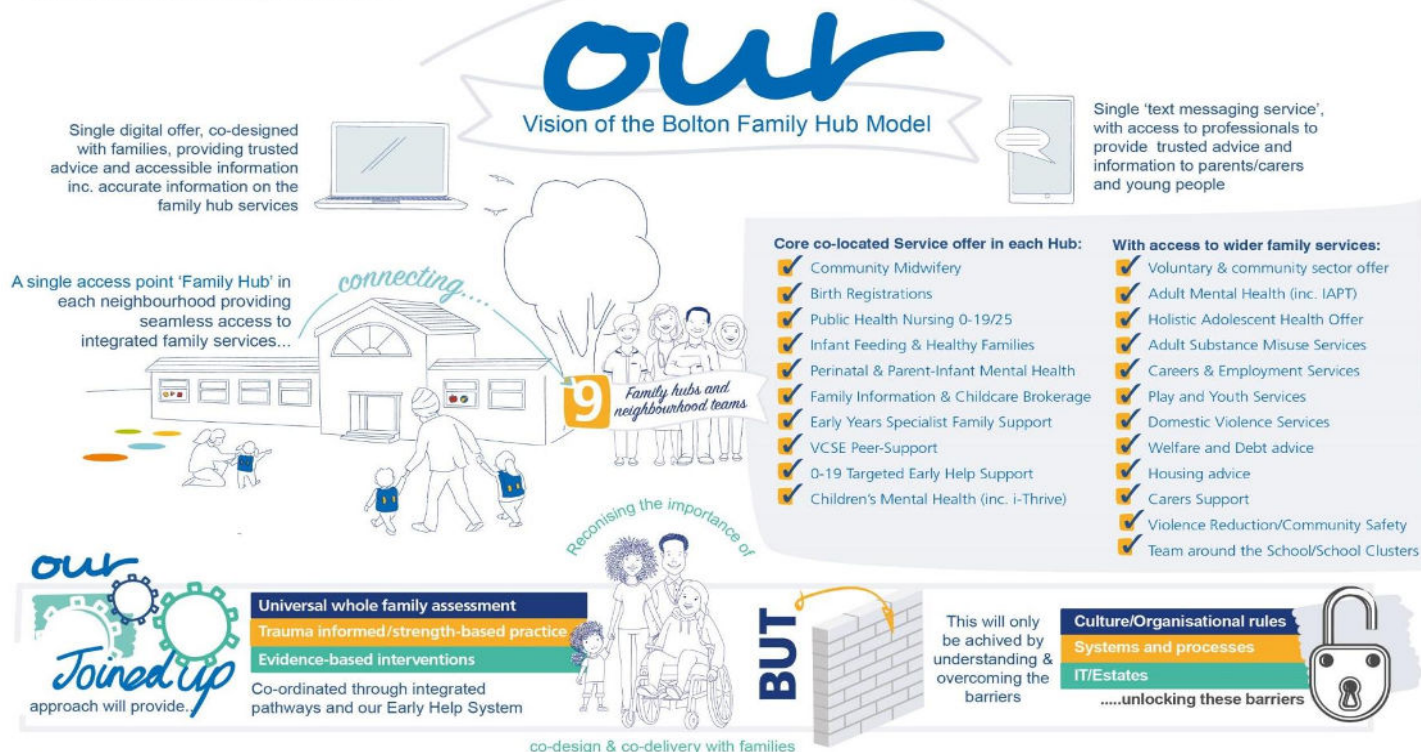
## Background to The Family Hub

The programme's objective is to join up and enhance services delivered through transformed family hubs in local authority areas, ensuring all parents and carers can access the support they need when they need it.

There is a particular focus for the funded element of the programme on parents of the early years. Bolton Together Members will be supporting the delivery of services in the following areas: Infant Feeding, Parent Engagement, Perinatal Mental Health Peer Support, Stay and Play Delivery and Parenting Support. This two year programme will be led by Bolton Council and be delivered across the Voluntary Sector, Bolton Council and NHS Bolton Foundation Trust. On the next page is an overview of the full delivery programme.



## Annex 1: Bolton Family Hub - Vision



Believing in a shared vision will help align our goals and enable us to deliver a seamless model of family support

## Family Hubs Programme Summary



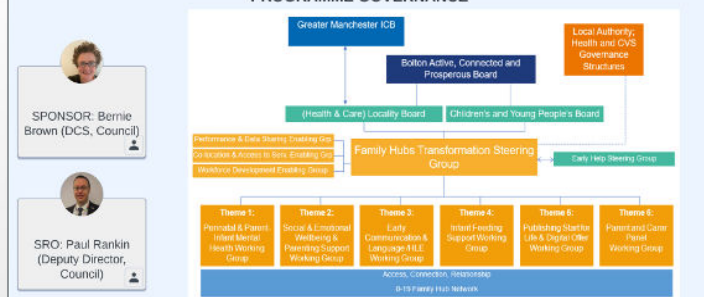
### Programme Aims & Objectives

- Every family receives the early and holistic care and support they need, when they need it.
- The programme's objective is to join up and enhance services delivered through transformed family hubs in Bolton, ensuring all parents and carers can access support when they need it through an improved universal Start for Life offer.
- All families have access to the information and tools they need to care for and interact positively with their babies and children, and to look after their own well-being.
- Local services, working together and in partnership with the voluntary, community and faith sectors, all playing a vital role in supporting families.
- Universal services available to all local families who need them can help to spot and respond to issues before they develop into more complex problems.
- Investing in supporting families to care for their babies, children and young people to help reduce health and education disparities from the start and improving physical, emotional and cognitive and social outcomes longer term.

1,001 Days

From conception to age 2 is a time of rapid development. Experiences during this time lay the foundations for lifelong emotional and physical health.

### PROGRAMME GOVERNANCE



### FUNDING (Indicative figures pending DfE Confirmation)

		min	max
	£	3,775,000	3,938,000
programme spend	19%	£ 732,350	£ 763,972
capital spend	5%	£ 184,975	£ 192,962
perinatal health	31%	£ 1,177,800	£ 1,228,656
parenting	16%	£ 604,000	£ 630,080
infant feeding	16%	£ 604,000	£ 630,080
home learning	9%	£ 347,300	£ 362,296
publishing start for life	3%	£ 128,350	£ 133,892

### FUNDED SERVICES

### FAMILY HUBS

#### 1. Parent Infant Relationships and Perinatal Mental Health

Workstream Lead: tbc

- GM EYDM integrated PPIMH pathway
- VCF perinatal peer support & outreach
- Universal & preventative VCF offer (families with mild/moderate mental health concerns)
- Parent and Infant Relationship Service
- Workforce capacity

#### 2. Parenting Support

Workstream Lead: tbc

- GM EYDM integrated SEWI parenting pathways.
- Initial advice, parent networks, stay play and learn provision from Hubs and wider network.
- VCF Peer Support & outreach provision
- Consistent parenting offer
- Workforce capacity

#### 3. Early Language and Home Learning Environment

Workstream Lead: tbc

- GM EYDM integrated EYCLD pathway
- Raising Early Achievement in Literacy (REAL)
- Universal 18 month assessment
- Workforce Capacity

#### 4. Infant Feeding Support

Workstream Lead: tbc

- Infant Feeding Strategy
- Baby Friendly Approach across the partnership
- VCS Infant Feeding & Peer Support Service
- Workforce Capacity

#### ACCESS

- Families easily able to access support through hub building & online.
- Hubs operating as a single access point with co-located teams.
- Wider Family Hub network established.

#### CONNECTION

- Shared services operating through a universal front door, shared outcomes and governance.
- Co-location, data sharing and a common approach.
- Effective & timely joint working across statutory services, VCS and faith sector partners.

#### RELATIONSHIPS

- Family Hubs prioritise strengthening relationships, recognising wider assets.

#### FAMILY HUB NETWORK

- Place based approach & Community Assets

#### ENABLERS

- Transformation Team
- Estates
- Communication, Digital and Engagement
- Data and Evaluation
- Commissioning
- Workforce
- Family Hub Wider Services