



Progress Update

January – mid March

Bolton Together

Engagement with Young People and Parents

- 53 Parents attended a drop-in session at Firwood school. 37 parents completed a Breaking Barriers questionnaire.
- Parents shared thoughts and expressed on-going concerns around opportunities outside of school, opportunities to develop friendships outside school, opportunities for teenagers to gain independence, SEND specific mental health support, school holiday provision, social events.
- Barriers identified by organisations to people accessing their offer:
 - Transport
 - Finance
 - Trust

- Commissioned 'Communicart' to produce the evaluation report including a graphic overview of the mapping with drop points - currently in the process of producing the draft, with a deadline for end of June.
- Providers continuing to map the offer and meet with organisations to explore development opportunities, best practice and identify challenges and barriers.
- Exploring online gaming opportunities include Spectrum Gaming and provision from Breaking Barriers who have an online gaming offer managed by a member of staff, tends to Minecraft but there is a big social element as they have a half an hour facetime before they start.
- Lancs FA – relaunched their PAN disability offer with the establishment of two new roles to support training and build capacity within teams. From March relaunching their disability league matches. Also looking to launch a 5-11 years "Wildcat" provision specifically for SEND.
- Exploring further conversations with Lancashire Disability Cricket Club who are relaunching their offer and also have a soft ball squad. Discussions taking place re potential to deliver within Bolton.
- LadyBridge Community Centre run by the Ladybridge Residents Association. Offer spaces for individuals/business to rent, has preschool, yoga and Islamic groups. BB met with the Treasurer, the space consists of 3 halls, a full kitchen, both male and female toilet facilities, two car parks and step free access into the building. Centre has great potential but requires a makeover and a new website to promote their offer.

Ongoing Developmental Support

- The Well in Farnworth run a range of sessions throughout the week in the heart of the community. BLGC offered to work alongside them to roll out the offer to engage younger children with SEND who's parents might be using one of their other services.
- Ongoing conversation with Bolton Trampoline Club who have made a positive start with their stay and play sessions. Shared examples of good practice from the A team provision in Leigh and passed on contact details for continued partnership working. The Sensory pack they have applied for will not only benefit the current members of the trampoline club who have SEND but will give the staff the confidence to roll this out wider, knowing they have a dedicated space to use should they need it.
- Believe and Achieve. Consulted with the team about their SEED Funding application. Shared A team contact details for examples of good practice.

Ongoing Development Support

- Ongoing conversations with Rumworth school re opening up to wider community and offer.
- Disability Awareness and Positive Risk Management Training for Holiday Activity and Food Programme Providers - 'Happy Smiles'
- Supporting Rumworth community centre to expand their offer
- Supporting HAF providers to improve accessibility including further information on the HAF website about encouraging parents to have conversations about the needs of their child and the support required.
- Met with Beyond Empower – exploring becoming members of Bolton Together and their offer to increase community inclusion.
- Explore opportunities for young people to attend Bolton Wanderers matches independently with support from the Club.

Comparison of Local Offers by Breaking Barriers

Bolton Local Offer	Opposing Local Offers
Clearly laid out and easy to use.	Realistic timescale for constant state of improvement.
Search bar almost unidentifiable at the bottom.	Easy read EHC plans.
Good links to Universal Credit and PIP.	Clear separation of appropriate sections.
Bare minimum information of Friends, Relationships and the Community.	Key focus put on parents/families and support groups.
Links to housing support services are good.	Clear focus on further education opportunities.
No link to outside groups or resources other than those which are already easy to find on google.	Up to date news on areas which may affect individuals.
No opportunity for individuals who use the local offer to feedback on its performance.	Ability to save favourite/relevant pieces of information.
	Review/feedback opportunities.
	Focus on work opportunities in the local area.
	Great access to outside sources.

Parental Interview – How Do You Find The Local Offer

Parent/Volunteer for Bolton IAS and BPCC

- No Back Button
- Where's the search bar?
- Abbreviations with no explanations
- Cannot locate forms
- Further actions for support after diagnosis?

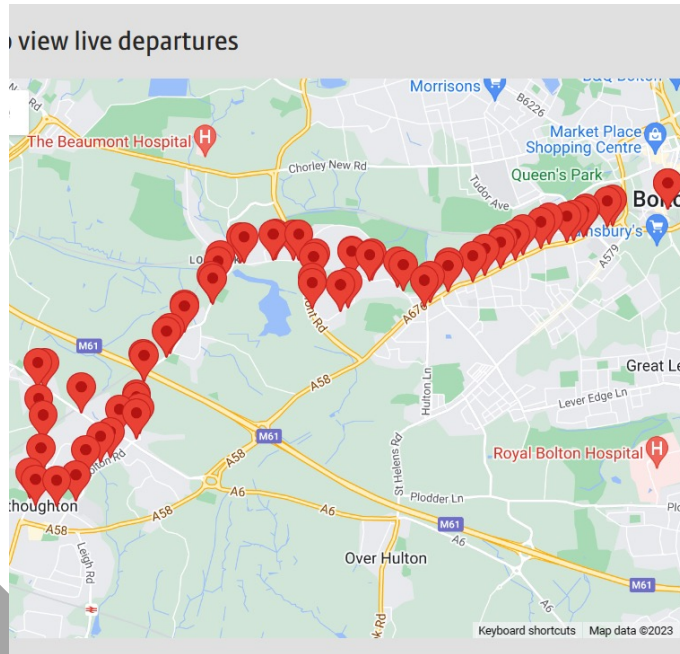
Parent/Rumworth and Lifebridge

- EHCP Assistance not available.
- Adult groups? Where?
- No help for people who feel 'lost'
- Speech and language accessibility could be improved
- Independent living could be improved
- Social worker assessments can be intimidating – help would be nice

- No answer to hypothetical 'what ifs?'
- No cover of DLA forms or any support services.
- Why should you have to ring to receive help?
- Not enough provisions.

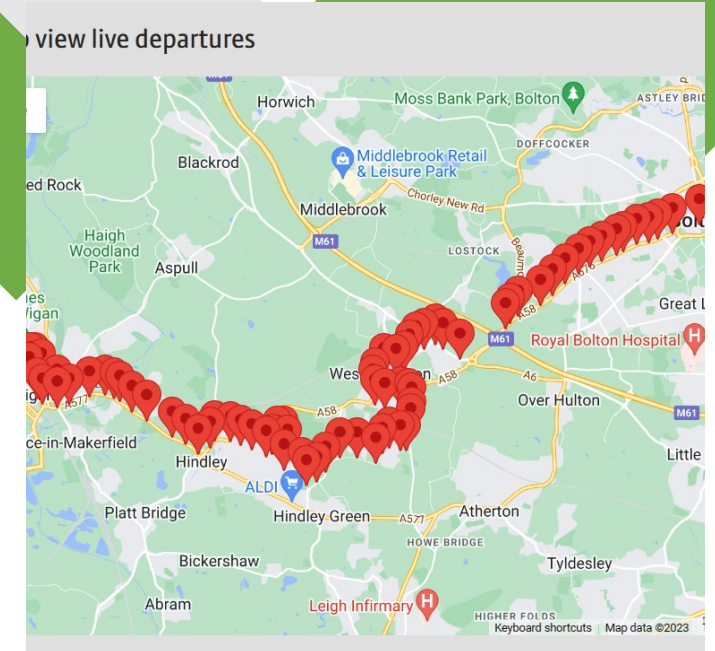
- Doesn't actually know what's available.
- Where to next?
- Support for parents and carers.
- Childcare options?
- Something public should be available for people with no wifi – maybe physical resources

Bus Route Difficulties



Bus Route - 520

Shown here are the 2 bus routes available from the TFGM website which run through the Rumworth area. Evidently, this is very hard to view and is difficult to follow, there is also no available interactive map which would show how to get to an individual's nearest bus stop. The availability of something like this could be crucial in giving an individual with SEND the ability and independence to travel around confidently. This could easily be addressed by the creation of an interactive map for individuals to use or a simplified version of what is currently available that is easier for people to follow.



Bus Route - 7

SEED Funding

- Development of EOI process and sensory pack information with Jenny Wilkinson
- Panel next week with parents and reps from Bolton Together, BLGC and Breaking Barriers and GM ICB
- Challenges in encourages universal settings to apply to increase accessibility and encouraging SEND Specific Services to consider opening up to wider community

requested funds?	RECEIVED	ORGANISATION
Yes	15/02/2023	FLOWHESION FOUNDATION
No	15/02/2023	BROAD OAKS NURSERY
Yes	15/02/2023	BELIEVE ACHIEVE
Yes- awaiting figure	09/03/2023	ORCHARDS NURSERY
Yes	14/03/2023	RAISE THE YOUTH
Yes	14/03/2023	FRIENDS OF GREENFOLD
Yes	14/03/2023	FARNWORTH BAPTIST
Yes	14/03/2023	HIGH NEEDS BASES
No	14/03/2023	BOLTON WANDERERS ITC
Yes	14/03/2023	SEND STAY & PLAY
Yes	14/03/2023	LITTLE BATS

SENSORY PACKS REQUESTS		
4	10	4
S	M	L

COMMUNITY INCLUSION

Initially
focused on the
Rumworth &
Farnworth
areas

Supporting
communities
to be
accessible and
inclusive

FUNDING POT

DEADLINE 5PM 14TH MARCH 2023

Apply
Today



Up to £1,000
available



Training , Equipment ,
Promotion & Sensory
Packs

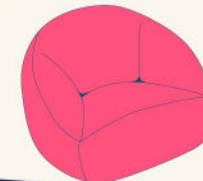


Complete a short
application form



Contact Laken Reid for The Rumworth Area and Natalie
Schofield for the Farnworth area for further information
and an application form

breakbarriers3@gmail.com and
natalie.schofield@blgc.co.uk



Bolton

Together