

The Bolton Family Hub Workforce Newsletter - December 2023



Welcome to the first edition of the Family Hub Workforce Newsletter – your guide to Family Hub updates, collaborations, and success stories. Bolton Together are delighted to take the lead for this first newsletter and thrilled to bring you the latest happenings and opportunities that will collectively make a positive impact on the lives of families in the Bolton Community.

Content

Family Hub Workforce Opportunities

Spotlight on Partners: The Family Hub Logo

Bolton Together Family Hub Offer

Collaborative Working: The New Family Hub Practitioners

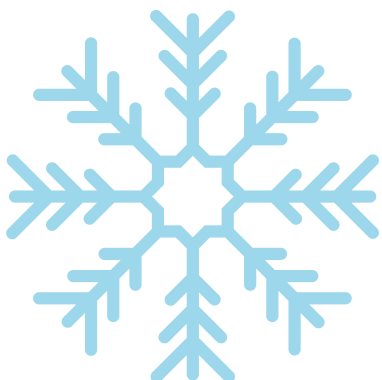
Case Study Corner

Bolton Together Provider Spotlight

Resources and Tools for Multiagency Success

Latest Research

Feedback and Suggestions



In partnership with:

Bolton Together

Bolton
Council

NHS
Bolton
NHS Foundation Trust

bolton
CVS

NHS
Greater Manchester
Mental Health
2012 Partnership Trust

Family Hub Workforce Opportunities

Joint training sessions bring together professionals from both Bolton Together Providers and wider Family Hub Partners.

The Solihull Approach Workforce Training

Solihull 2-day foundation Training:
24th January 2024
7th February 2024

Reflective supervision training
22nd January 2023

Train the Trainer
12th February 2024

An additional Parenting Group Facilitators Training and Train the Trainer will be offered in March Dates TBC.

Please email Elinor.halliwell@breastfeedingtogether.co.uk to register your interest.

Bolton's Family Hubs Workforce Engagement Sessions: Lunch and Learn

Supporting LGBTQ+ Parents in Multiagency Settings: Bolton Together and Proud2bParents

February 2nd at BLGC Infinity Building, Spa Rd, Bolton: 12:00 – 13:30.

Check with you manager and please book your place via this link:

[Supporting LGBTQ+ Parents in Multiagency Settings – Lunch and Learn Event](#)

Oral Health: The Healthy Families Team and Bolton Council

February 15th at Harvey Start Well Centre, Shaw Street Bolton: 12:30 – 13:30.

check with you manager and please book your place via this link: [Oral Health – Lunch and Learn Event](#)

UNDERSTANDING YOUR CHILD



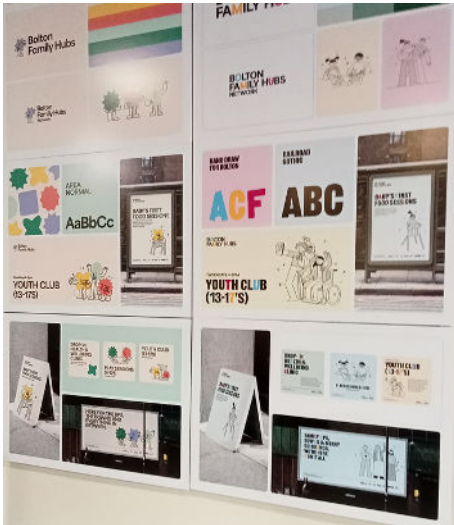
SOLIHULL APPROACH



A graphic for Bolton's Family Hubs Workforce Engagement Session's. It features a purple and pink background with a network diagram of circles and lines. The text reads: "Bolton's Family Hubs Workforce Engagement Session's" and "An opportunity to hear about Bolton's ambitions and plans to develop Family Hubs across the borough with opportunities to share ideas." Logos for NHS, Bolton Council, and bolton CVS are visible.

Spotlight on Partners: The Family Hub Logo

A new Family Hub Logo will represent partnership and signify Family Hubs to families in Bolton. During the Family Hub launches, parents were asked for their opinions on the two logo choices. The feedback has been collated and the new fun and accessible logo is coming soon.



Bolton Together Family Hub Offer

We deliver stay and play sessions across the below venues:

- Oldhams Start Well Children's Centre
- Harvey Start Well Children's Centre
- The Roost, Ashley Avenue, Bright Meadows
- Great Lever Family Hub
- Alexandra Family Hub
- Sutton Community Centre
- Farnworth Family Hub
- Tonge Family Hub
- The Hub Westhoughton

The sessions vary from accessing Toy Library play sessions, to exploring the outdoors with a 10 week forest school course. You can see more here: [Start Well Family Hubs Programme](#).

Perinatal Mental Health Offer

Peer Support groups with trained facilitators and one-to-one support are available to parents and carers with mild mental health difficulties. This is offered by Bolton Toy Library, Proud2bParents and HomeStartHOST.

Contact Details:

Proud2bParents: info@proud2bparents.co.uk

HomeStartHOST: info@homestarthost.org.uk

Bolton Toy Library: enquires@boltontoylibrary.org

In partnership with:

Bolton Together

Bolton Council

NHS Bolton
NHS Foundation Trust

bolton
CVS

NHS Greater Manchester
Mental Health
NHS Foundation Trust

Collaborative Working – Introducing the New Family Hub Practitioners

If you're in and around the Family Hubs, please look out for the new team of Family Hub Practitioners. Made up of team members from both the Council and NHS, working in partnership with each other, they will be located within the Family Hubs.

The Family Hub Practitioners from the NHS will be joining the team in January. The current Family Hub Practitioners in post are, myself, Hannah Brown – Senior Family Hub Practitioner, and my team, Dawn Jemmett, Nicola Kenny and Leanna Brown.

Three further practitioners have been newly appointed this month and are hoping to start between January and February. As a new team we are currently familiarising ourselves with the Family Hubs including the sessions and services on offer for families and the different professional teams involved in their delivery. We have been working alongside the Locality Practitioners and numerous Bolton Together Organisations who run the sessions. Observing all the amazing work they do to support families with their children's development. We have also met with external partners of the Family Hubs and wider network, such as Caroline Hall from the Central Library and Nicola Taylor, Family Hub Volunteer Coordinator from Bolton CVS: nicola@boltoncvs.org.uk.



Our aim is to become a familiar face for families who come into the Hubs and offer information and support, sign-posting families to services both within the Family Hubs and wider network. Working within the community to ensure families are informed of what's on offer in their local area, with a particular focus on the early years and first 1001 critical days.

Hannah

Hannah.Brown@bolton.gov.uk

In partnership with:

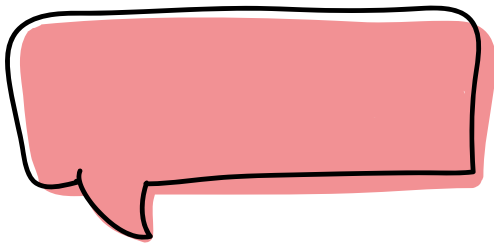
Bolton Together

Bolton Council

NHS Bolton
NHS Foundation Trust

bolton CVS

NHS Greater Manchester Mental Health
NHS Foundation Trust



Case Study Corner Real Stories, Real Impact,

Breastfeeding Together
Emma's Story - Baby Boy, 5 months old

'I can't thank Breastfeeding Together enough for the support they have offered me since giving birth in June'

'I was introduced to the charity on the hospital ward after giving birth. A peer supporter introduced herself, talked to me about breastfeeding and offered to observe a feed so that I could make the best possible start. She was friendly, helpful, non-judgemental and made me feel at ease. I was delighted to find out that there was a Facebook group where new mums like me could ask anything, get support from other new mums and the peer supporters. It made the whole experience of breastfeeding less daunting and meant I didn't feel alone throughout the process.

After a few weeks of feeding, I started to encounter pain. I received a home visit from a peer supporter who observed a feed and made a small suggestion for how to improve baby's latch. Although only a small suggestion, it made a huge impact on the feeds and meant I was no longer in pain and could carry on successfully breastfeeding. Now, 5 months on, I'm so happy I reached out to Breastfeeding Together. Without them, I may have ended up stopping breastfeeding as other support from the Infant Feeding Team, midwives and health visitor just did not get to the crux of the problem. Breastfeeding Together did!

The weekly support groups offered in the community and online are fantastic too and I thoroughly enjoy the weekly groups with some of the peer supporters and other mums.

Thank you Breastfeeding Together, the help you give is invaluable!

Bolton Together Provider Spotlight: Infant Feeding

What do they do?

Breastfeeding Together provide Infant Feeding Support. Parents who are offering breastmilk are provided access to one-to-one practical help on maternity wards at Royal Bolton Hospital in the immediate postnatal period to support breastfeeding initiation, responsive feeding and relationship building. In addition to this, Breastfeeding Together provide an infant feeding peer support service across Bolton. All services are free and include drop-in infant feeding support groups and antenatal sessions which are available within Family Hubs. Home visits, pump hire and out of area support are available in the evenings and at weekends. Breastfeeding Together are based at Oxford Grove Family Hub.

What is their experience?

Breastfeeding Together were founded in 2015 and have many years of experience supporting families within infant feeding. They also deliver accredited training to all their own staff and volunteers plus other organisations across the UK. They have the knowledge, skills, and education to protect and promote breastfeeding by ensuring they provide up to date, evidence based information. Infant Feeding peer supporters are trained and able to provide both practical and emotional support, staff can identify and respond to more complex infant feeding needs and offer timely support to all families who need it so they can continue to provide breastmilk for as long as they would like to. This includes working with partners to identify the most appropriate referral pathways and signposting processes.



How do I get in touch?

Telephone:
01942 236111
07742 234496

Email:
Enquiries@breastfeedingtogether.co.uk

In partnership with:

Bolton Together

Bolton
Council

NHS
Bolton
NHS Foundation Trust

bolton
CVS

NHS
Greater Manchester
Mental Health
NHS Foundation Trust

Resources and Tools for Multiagency Success

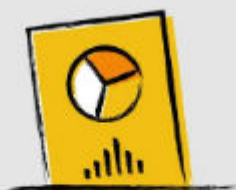
[National Centre for Family Hubs](#)

[The Family Hub Network](#)

[Bolton Family Hubs Start For Life Programme](#)

[Start Well Family Hubs Programme](#)

Latest Research



The Good Childhood Report 2023 | The Children's Society

The Good Childhood Report 2022 found that school, friendships and appearance continue to cause the

**National Centre
for Social Research**

What we do

Our reputation for conducting complex and robust social research is second to none.



Scottish Government
Riaghaltas na h-Alba
gov.scot

Voice of the Infant: best practice guidelines and infant pledge

Co-produced by a short-life working group, on behalf of the Infant Mental Health Implementation and Advisory Group, which is part of the Scottish

Feedback and Suggestions

The next edition of the Bolton Family Hub Workforce Newsletter will be released in February 2024.

To discuss this edition of the newsletter, or chat further about the Bolton Together Family Hub Offer, please contact Katrina.Fletcher@boltontgether.org.uk.

For general Family Hub Enquiries please email:
FamilyHubsQ&A@bolton.gov.uk

Thank you for being a vital part of the Family Hub community.



All the Very Best

Bolton Together

In partnership with:

Bolton Together

**Bolton
Council**

**NHS
Bolton
NHS Foundation Trust**

**bolton
CVS**

**NHS
Greater Manchester
Mental Health
NHS Foundation Trust**